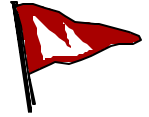


Region 2 Spring Classic

Sailing Instructions – Amendment #1



MAGOTHY RIVER SAILING ASSOCIATION

Saturday 10 May 2008

Sanction # 200 & 201

Entry Due: Thursday 8 May 2007

Entry Fee: USSA Members: \$20

Others: \$25

Send To: Craig Coltharp
607 Carville Ln.,
Centreville, MD 21617

Online Entry: http://www.magothysailing.com/bin/race_entry.php

SI's & Scratch Sheet: <http://www.magothysailing.com/bin/racing.php?pg=Info>

Contact: Craig Coltharp, (443) 822-7595, email: rear_commodore@magothysailing.com

Rendezvous: Fleet shall rendezvous with a club boat displaying code flag "L" 1/4 mile southwest of the southwest corner of Dobbins Island inside the Magothy River at 0930 and proceed to starting area.

Start: The starting line shall be between the yellow flag on the Committee Boat and the adjacent permanent mark location "A", "C", "D", or other mark, at the Race Committee's discretion. The starting area for a drop mark course will be anywhere in the area roughly bounded by the permanent marks "A", "B", and "D". If conditions warrant, the Race Committee may drop a starting mark, which will be designated as "U", as an alternative starting mark.

Finish: Between yellow flag on RC boat and adjacent MRSA permanent race mark. (Note: The USSA definition of "Finish" requires the boat to finish in the direction of the course from the last mark.)

Course: The goal is to conduct two races, each of at least 6 nm (4 nm min). The race committee will signal an additional race by displaying code flag "R" at the finish line prior to the first boat finishing.

Courses shall be designated by letters displayed on the Race Committee boat, the letters designating the location of the mark as indicated on the Magothy River Chart- rev #2.

- **All mark designations are rounding marks.** Marks shall be rounded in the order displayed, from left to right or from top to bottom. Marks designated by RED letters or background shall be rounded to PORT. Marks designated by GREEN letters or background shall be rounded to STARBOARD. All channel markers shall be passed on the channel side. One circuit shall be sailed unless the course description is followed by a numeral (e.g., "2" or "3") that designates the number of laps.
- **The Committee Boat shall always post the finishing mark of the course, regardless of the number of laps posted.**

Marks

In the Magothy River all permanent marks are Special Racing Marks or Buoys located in the general area portrayed in the “**Magothy River Chart - rev #2**” at the end of this section. The compass courses and distances between racing marks are indicated in the table following the chart. Drop marks are inflatable marks placed in suitable locations prior to the race.

Signals: RRS 26

Race 1 – Sanction #200

CLASS	TIME	SIGNAL
	9:30	Rendezvous
	10:20	Attention
	10:25	Warning
PHRF A	10:30	Start
PHRF B	10:35	Start
PHRF C/D	10:40	Start
PHRF N	10:45	Start
Catalina 27	10:50	Start **

**Cat27 Fleet 8 will score race #200 and #201 as a single event for CBYRA High Point Purposes

Lunch A 20 minute lunch break will start at the earlier of the last boat finishing Race 1 or last time limit reached. RC will sound a long horn to signal the start of lunch.

Race 2 – Sanction #201

RC will drop code flag “R” and display code flag “F” along with a gun to initiate the starting sequence (“attention”) for Race 2. Sequence time below is relative to the start of the sequence.

CLASS	TIME	SIGNAL
	+0:00	Attention
	+0:05	Warning
PHRF A	+0:10	Start
PHRF B	+0:15	Start
PHRF C/D	+0:20	Start
PHRF N	+0:25	Start
Catalina 27	+0:30	Start **

Time Limit: There will be a 2 hr 15 min time limit for Race 1 and a 3 hr Time limit for Race 2. Any racer not finishing within that limit will be scored DNF.

Radio: Boats may monitor VHF channel 68 during the race for courtesy RC communication.

Protests: Verbally notify RC boat at finish line. Written protest forms must be hand delivered to Craig Coltharp at the post race social within 90 minutes of RC departing finishing area. Parties involved will be notified of the time and place for the hearing.

Awards: 1st/3, 2nd/5, 3rd/7 or more finishers. Certificate awards will be presented announced at the post race party. Trophies will be presented at the MRSA awards banquet in October or mailed (winner’s preference).

Social: From 1600 – 1930, there will be a Trophy & Social Raft-up immediately following the 2nd race. Raft will form in Broad Creek, which is only 1 nm west of Dobins Is.

Raft leader will be anchored in Broad Creek flying the MRSA Burgee. If people prefer to anchor out from the raft, we will have ferry service to get them to and from the party. Check below for more details regarding land access.

We hope cruisers and other MRSA and Region 2 folks who like to socialize will also join us, and show the racers how to do these floating socials. Please bring an appetizer to share for the social hour from 1600-1800. Awards presentations will start at 1800. BYOB, soft drinks and some appetizers will be provided.

Results: Race results will be announced at the Social Raft-up and will be posted on the MRSA web page: www.magothysailing.com.

**Land Access: MRSA Spring Classic Raftup—Driving Directions for “Land Cruisers”
Starts at 4:00 pm
Wes & Sheryl McNairs’ Pier (for the Water Taxi to the Raftup Party)
384 Eagle Hill Road, Pasadena, MD 21122**

From Annapolis, Arnold, etc....

Take Route 97 or Rt. 2 north toward Baltimore.

Take Route 100 East toward Gibson Island.

Follow Route 100 until it merges into Mountain Road.

Continue on Mountain Road through the first stop light at Lake Shore Drive.

Continue 3/10 mile past the stop light and turn right at the 2nd right on North Shore Road.

Go 5/10 mile on North Shore Rd. You will come to a fork in the road....

Bear right onto Eagle Hill Road. Continue to the end of Eagle Hill Road.

Park in the field, on the right hand side behind the mailboxes.

Walk 100 yds down the unpaved driveway, toward #378

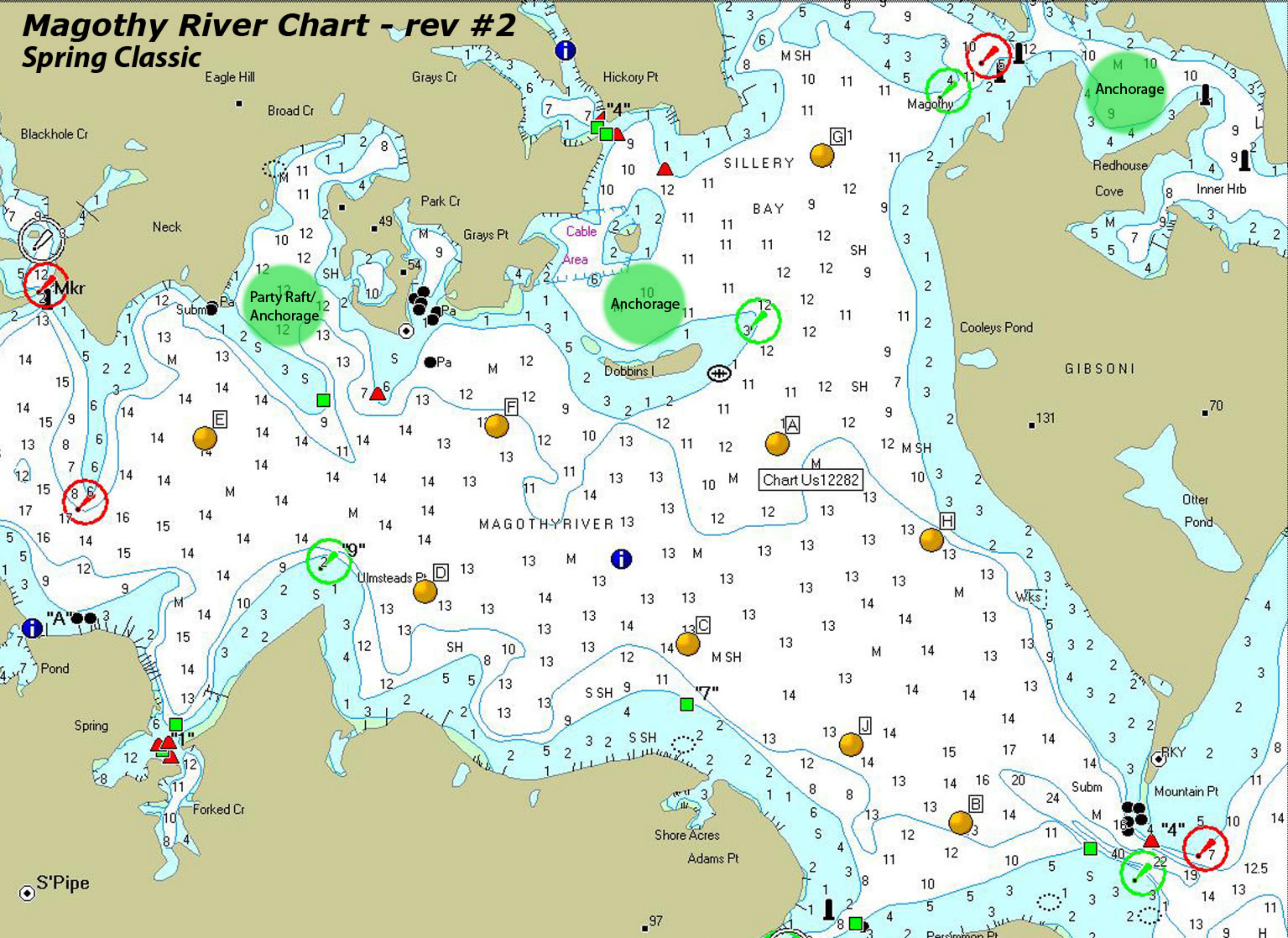
Continue past the small boat storage rack to the pier.

Peggy Poe’s Cell Phone 410-916-3480

Commodore Ed Poe’s Cell Phone 410-916-0325

Magothy River Chart - rev #2

Spring Classic



Race Mark Tables

Table of Race Mark Positions

Mark	Latitude	Longitude
A	39-04.466	76-27.253
B	39-03.450	76-26.620
C	39-03.930	76-27.560
D	39-04.070	76-28.470
E	39-04.480	76-29.230
F	39-04.513	76-28.221
G	39-05.240	76-27.100
H	39-04.210	76-26.720
J	39-03.660	76-27.000

Table of Magnetic Bearings Between Race Marks

	A	B	C	D	E	F	G	H	J
A		166	215	259	282	285	020	133	178
B	346		315	305	308	322	360	006	317
C	035	135		293	304	330	027	078	133
D	079	125	113		316	035	054	096	121
E	102	128	124	136		099	077	109	127
F	105	142	150	215	279		062	116	143
G	200	180	207	234	257	242		176	189
H	313	186	258	276	289	296	356		213
J	358	137	313	301	307	323	009	033	

Table of Distances Between Race Marks

	A	B	C	D	E	F	G	H	J
A		1.13	0.59	1.03	1.54	0.76	0.77	0.49	0.83
B	1.13		0.89	1.57	2.28	1.64	1.83	0.77	0.37
C	0.59	0.89		0.71	1.41	0.77	1.35	0.72	0.51
D	1.03	1.57	0.71		0.73	0.49	1.58	1.37	1.21
E	1.54	2.28	1.41	0.73		0.79	1.82	1.97	1.92
F	0.76	1.64	0.77	0.49	0.79		1.13	1.20	1.27
G	0.77	1.83	1.35	1.58	1.82	1.13		1.06	1.57
H	0.49	0.77	0.72	1.37	1.97	1.20	1.06		0.59
J	0.83	0.37	0.51	1.21	1.92	1.27	1.57	0.59	